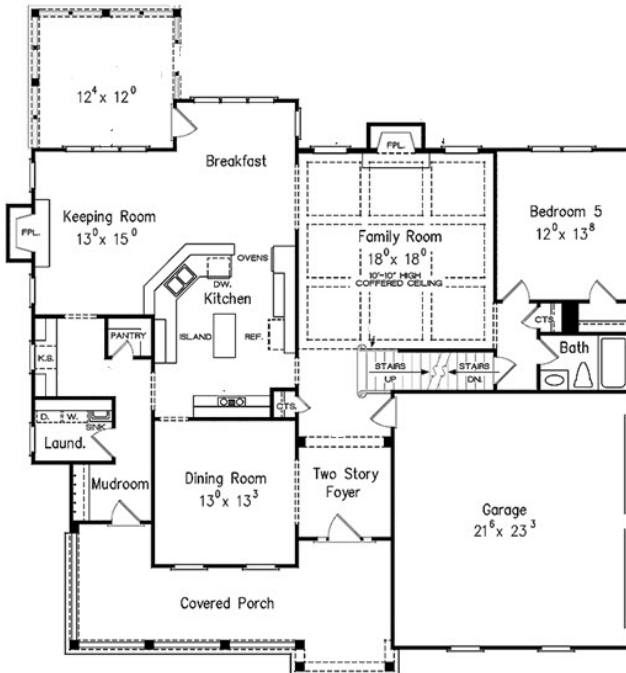


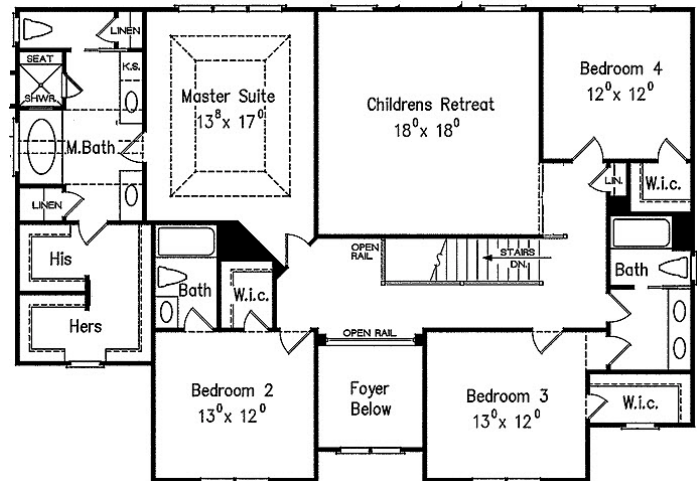
3217 Fielder - 3,574 sq ft



1st Floor



2nd Floor





Standard Features

Many standard features found in Javic Homes are optional features of other builders. We build with many fine materials and products because we believe you should enjoy your home without the need of endless upgrades. This listing of our standard features includes both our standard materials/products, as well as the details for some of our construction techniques.

HOMESITE

- Full 1-year and 10-year structural/mold warranty
- Lot preparation up to 100 yards of fill dirt
- Termite soil treatment under entire home including garage, lanai and house perimeter
- Concrete walks and driveway; paver porches
- Tropical landscape package
- Zoned sprinkler system with automatic timer/rain sensor

INTERIOR FEATURES

- 5" base molding throughout; 5" crown in family room, dining, kitchen & foyer
- 3" wood window sills/skirts & door casing throughout
- Oak stair treads and handrail, painted risers and wood balusters
- Orange peel walls and knock down ceiling finish throughout; Semi gloss trim paint; Select up to 3 interior and 2 exterior flat wall paint colors
- Pre-finished 3" wood flooring in family room, kitchen, dining and foyer
- Ceramic tile in wet areas (e.g., baths, laundry)
- Long-life, stain resistant carpet in bedrooms and closets
- Ventilated shelving in all closets
- Lever style interior door hardware; Locksets & privacy deadbolts at all exterior doors
- 7' framed glass shower enclosure in master shower
- Fiberglass entry door with decorative glass insert; French fiberglass door at rear lanai; Remaining exterior doors are steel, Interior panel doors
- White raised panel steel sectional garage door with ½ HP chain drive opener and two remotes

ELECTRICAL

- Rocker type light switches
- Recessed can lighting in kitchen and hallways
- 5 phone and cable outlets
- Door chime with pushbutton
- Smoke detectors with battery backup
- Exterior weatherproof receptacles
- Multi-zoned security system with keypad, 1 motion sensor and contacts on all windows/doors
- Ceiling fan and light pre-wire in great room, all bedrooms and bonus room

KITCHENS, BATHS and LAUNDRY

- Stainless steel electric appliance package including: Refrigerator/Freezer, Dishwasher, Oven/Cooktop and Microwave Hood/Vent
- Maple cabinets with 42" uppers, crown molding, raised, square panel doors; Selection of finish stains and knobs/pulls in kitchen and baths
- 3cm granite counter tops with ½ bull nose edging and 4" backsplash in kitchen and baths
- Stainless steel kitchen sink with ½ HP garbage disposal
- White porcelain sinks and commodes in all baths; 5' steel tub in baths; Garden tub in master bath
- Vent fans in all baths
- Selection of Plumbing and lighting fixtures

QUALITY CONSTRUCTION FEATURES

- 50 gallon electric water heater
- 3,000 PSI concrete slab; 1st floor block exterior walls with 10' ceiling height; 2nd floor frame exterior walls with 9' ceiling height
- 2 exterior hose bibs
- Gypsum board on all walls and ceilings; moisture resistant board at all bath wet areas
- Engineered roof trusses w/ hurricane straps
- Hardi siding on exterior finish
- White fascia, soffit, gutters & downspouts
- 30-year dimensional roof shingles
- Two 13 seer heat pump systems and digital thermostats
- R-30 energy saving insulation in attic; R-19 exterior walls
- Double pane, Low-E, insulated white aluminum single hung windows

Exterior designs, floorplans and specifications are subject to change. Dimensions are approximate.