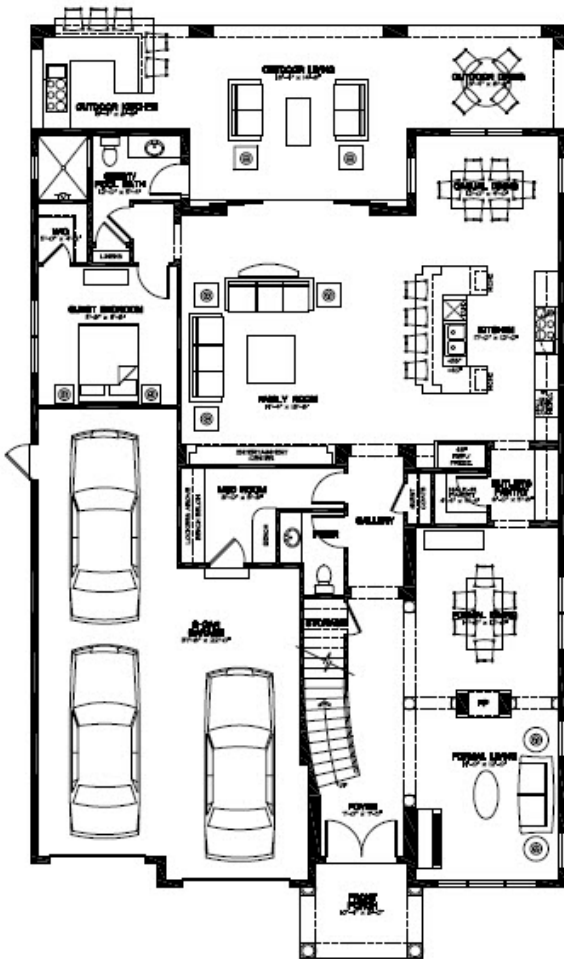


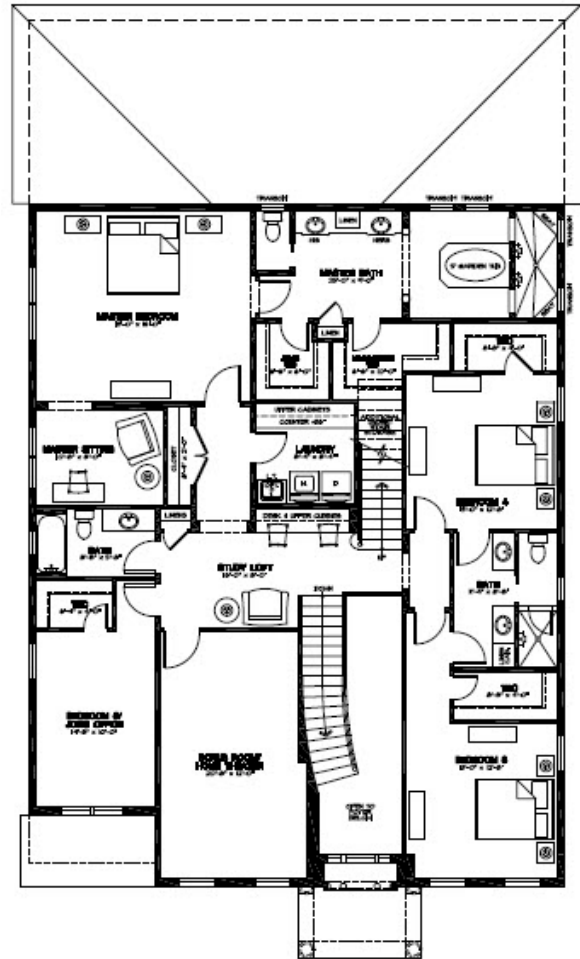
2604 Parkland - 5,500 sq ft



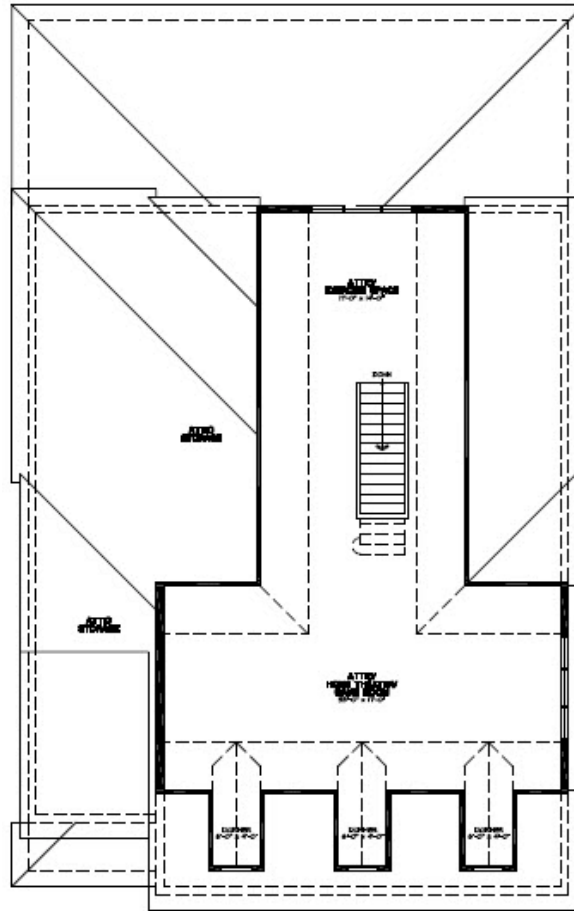
1st Floor



2nd Floor



## 3<sup>rd</sup> Floor



## **FEATURES**

### INTERIOR FEATURES

- 8' solid core panel interior doors; 8' double doors at entry & rear lanai
- 7 1/4" base & crown molding base molding
- 36" double sided fireplace with stone mantel & surround
- Stained oak stair treads, handrail & balusters; painted risers
- Panel steel sectional garage doors with 1/2 horse power chain drive opener and two remotes
- Solid wood floors; Upgraded tile in all wet areas; Carpet in bedrooms & 3<sup>rd</sup> floor
- Lever style interior door hardware

### ELECTRICAL

- Recessed can lighting throughout
- Structure wire with centralized technology closet
- Surround sound pre-wire in family room and theater room; 2 speaker pre-wire on rear patio
- Multi-zoned security system with 2 keypads, motion sensor and contacts on all windows/doors

### KITCHENS, BATHS & LAUNDRY

- Stainless steel KitchenAid appliances
- Cherry & maple cabinets in kitchen, baths, laundry & mud room
- Granite counters on all cabinets
- Tile backsplash in kitchen
- Beautiful high end plumbing & lighting fixtures

### QUALITY CONSTRUCTION FEATURES

- 2-story block walls; Concrete slab with footer/stem wall
- 10' ceiling height on 1<sup>st</sup> floor; 9'4" ceiling height on 2<sup>nd</sup> floor; 8' ceiling height on 3<sup>rd</sup> floor
- 30-year fiberglass shingle roofing
- Three high efficiency AC units
- Icynene spray insulation in attic
- Stucco exterior surface
- Single hung, double pane, Low E windows
- Paver driveway, front walkway & rear patio
- Tropical landscaping with automated irrigation system

*Exterior designs, floorplans and specifications are subject to change. Dimensions are approximate.*